

EveryOne Home is leading the collective effort to end homelessness in Alameda County. We're building momentum, using data to improve our efforts and aligning resources for long-term solutions.

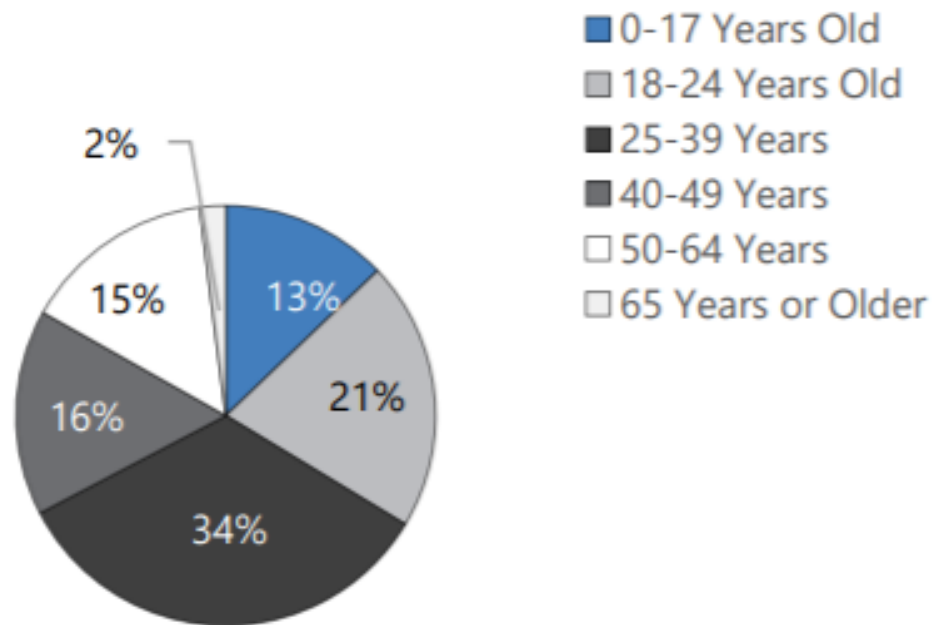
Strategic Plan Update

Right now, in Alameda County, approximately 5,600 people experience homelessness on any given night. Over the next five years, we aim to reduce that number to less than 2,200 people. If we achieve this goal, no one will have to sleep outside.



Alameda County (2017)

FIGURE 23. AGE AT FIRST EXPERIENCE OF HOMELESSNESS

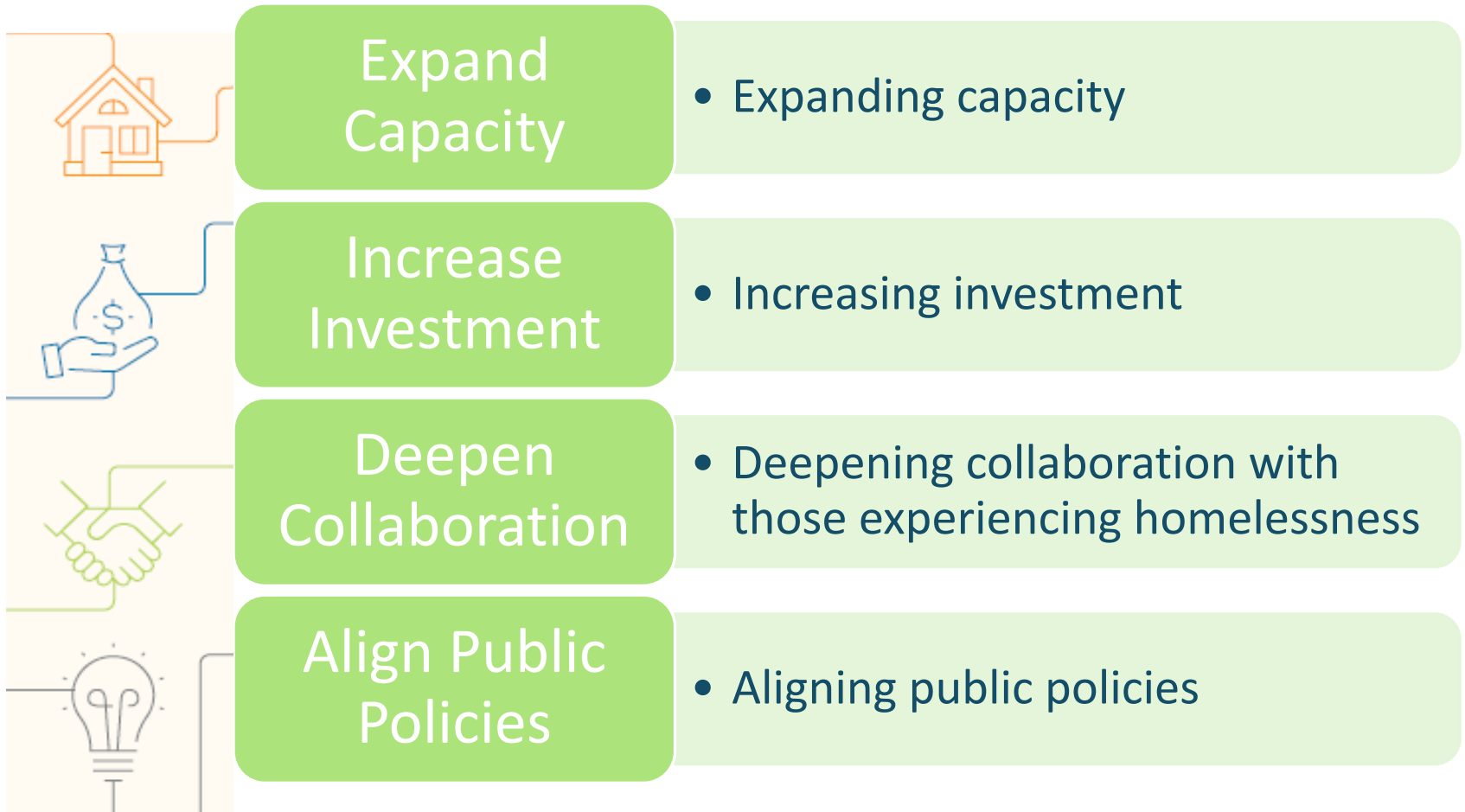




Overview

This Strategic Update focuses on:

- A. Preventing homelessness
- B. Creating safer and more dignified conditions for homeless people
- C. Increasing permanent homes



Strategies

Reaching Our Goals: Our Community

By targeting our efforts, it is possible to end homelessness for highly impacted and vulnerable communities in Alameda County.

This requires focusing on the racial disparities and structural inequalities that lead to homelessness and a commitment to delivering equitable results.

- End unsheltered family homelessness by December 2019 and all family homelessness by the end of 2023
- End chronic homelessness among veterans by March 2020 and all veteran homelessness by December 2021
- End chronic homelessness among older adults by December 2020
- Reduce chronic homelessness among persons with serious mental illness by 30% by December 2021
- Reduce all chronic homelessness by 50% by 2023
- Develop an action plan for youth in 2019
- Ensure safe access to permanent housing for people experiencing domestic violence, human trafficking, and sexual assault

What is next?

- The Board of Supervisors and all 14 city councils will be asked to adopt the Plan Update
 - Members support local government adoption with calls letters, remarks at council meetings
- Your organization, faith community, coalition can endorse the Plan Update and support its implementation
 - Members spearhead this in their own organization
- Local governments consider public policies and local revenue streams for implementation
 - Members encourage action by their local government & campaign for a revenue measure on ballot

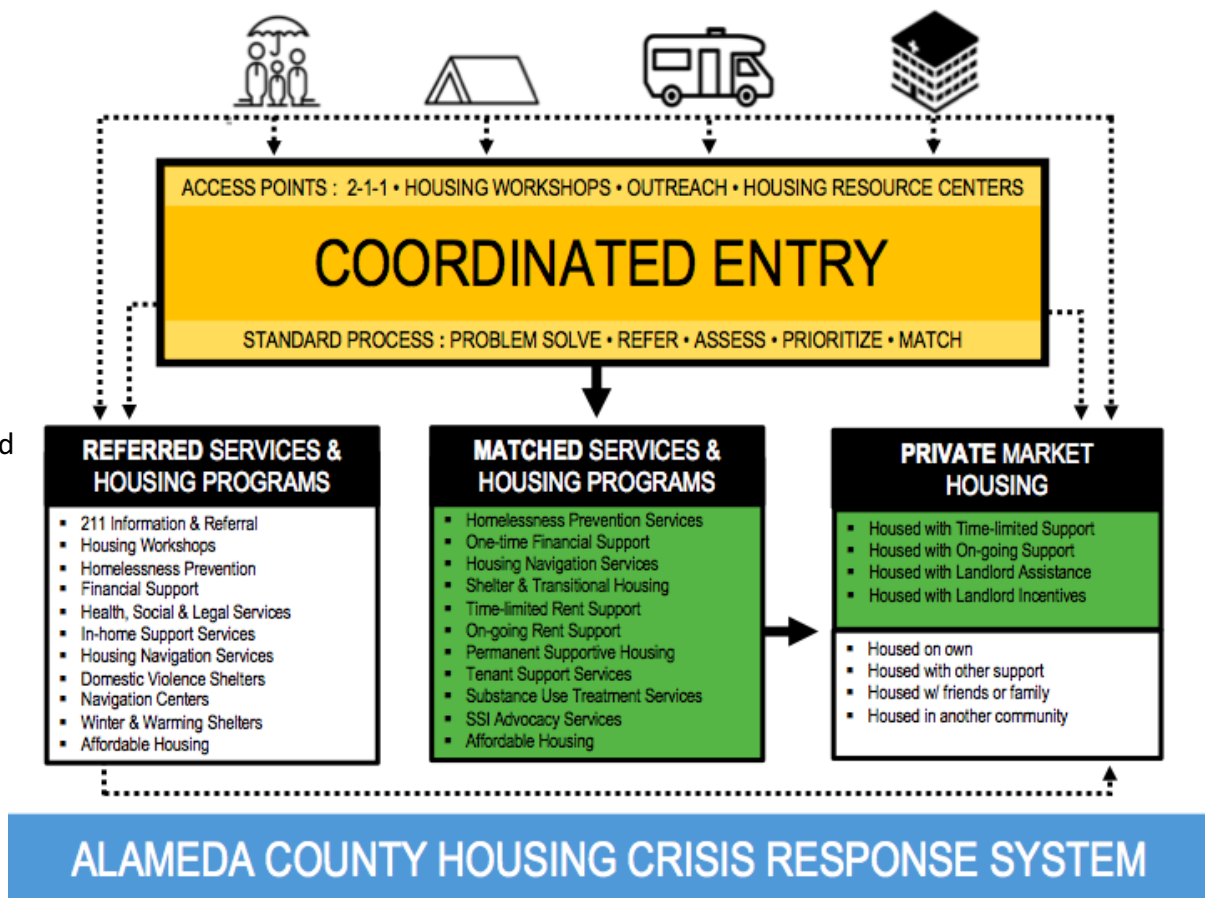


Coordinated Entry

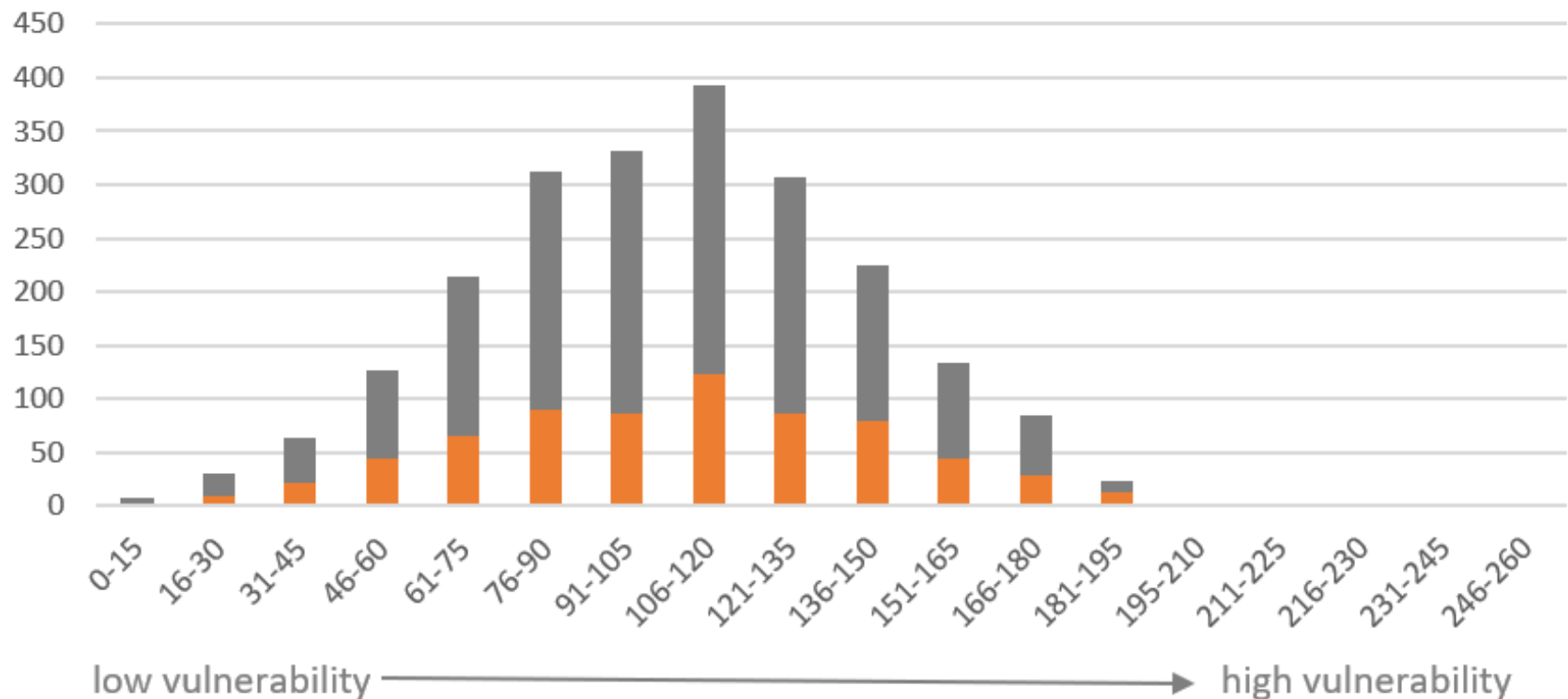
Standard way of accessing housing crisis response system resources

Prioritizes limited resources to the most vulnerable household

Ensures **equity** (consistent processes and tools) and **access** (no wrong door)



Distribution of Head of Households Aged 55+ (n=698)
within the Prioritized Homeless Households (n= 2,257)



Conditions Reported by Prioritized Households

