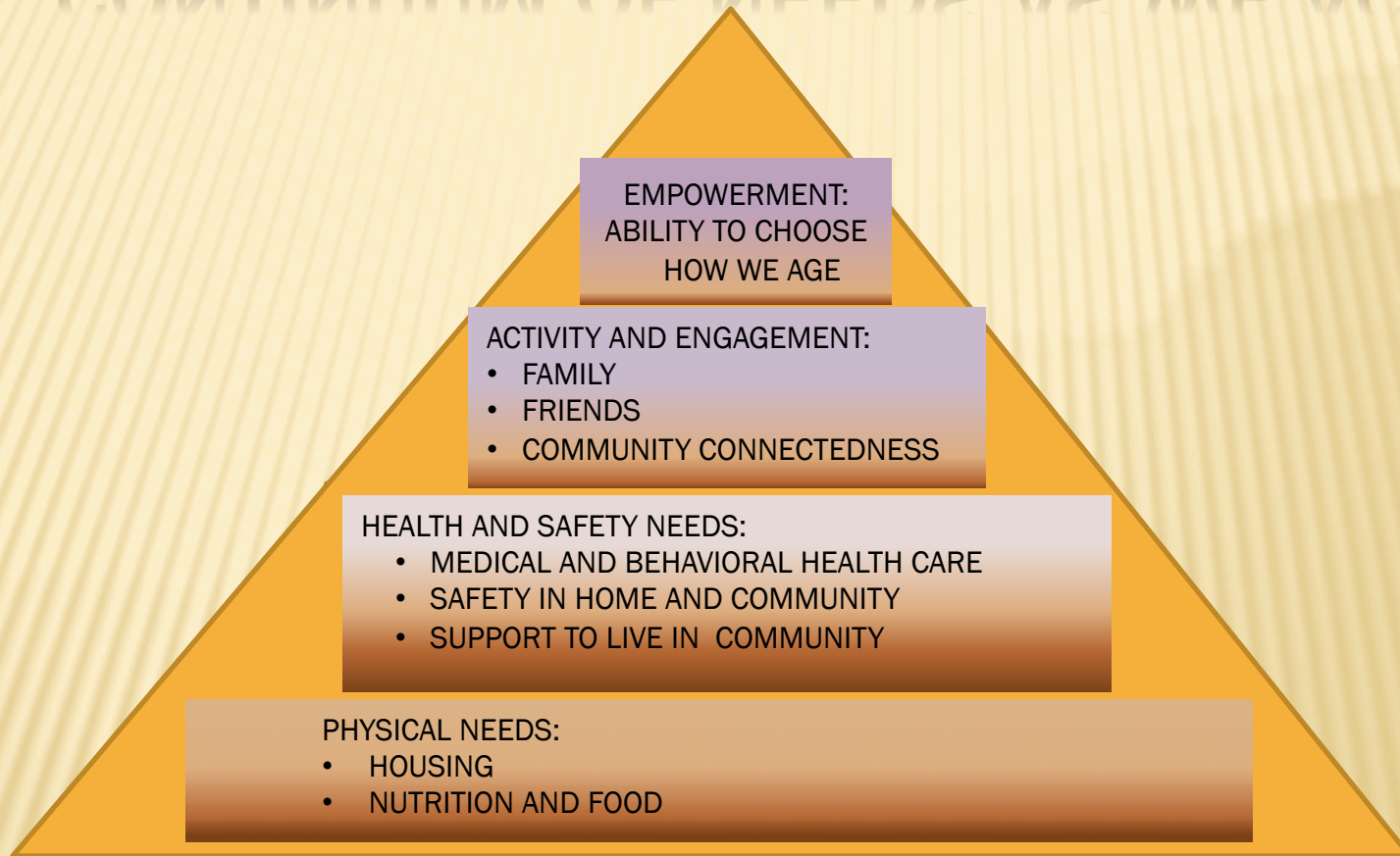


# CONTINUUM OF NEEDS AS WE AGE



*The Continuum will facilitate resource development and alignment to support older adults as they navigate the transitions of aging*

# APPROACH & GUIDING PRINCIPLES

- Active and engaged older adults guide our efforts;
- Using a Collective Impact approach, we leverage and coordinate existing partners and community resources before building new;
- All sectors are engaged: community, non-profits, government, education and health care providers;
- We work across traditional funding silos for horizontal integration;
- We are population-focused, person-centered, and recognize that a diversity of opportunities is the best approach to meeting the needs of our diverse community.



# METHODS

---

- We are focused on a **replicable model** for a defined **geographic area** that functions as a natural service area.
- We “drill deeper” in specific priority areas identified by the community. To start, these include:
  - **Housing** of all types: affordable, accessible, independent, supported;
  - Robust use of **technology** to support independence and reduce isolation;
  - A continuum of collaborating **service and supports**
  - **Prevention, early intervention** combined with robust **information and referral** systems to promote maximum well-being;
  - **Advocacy** for age-friendly public policy and innovation.

